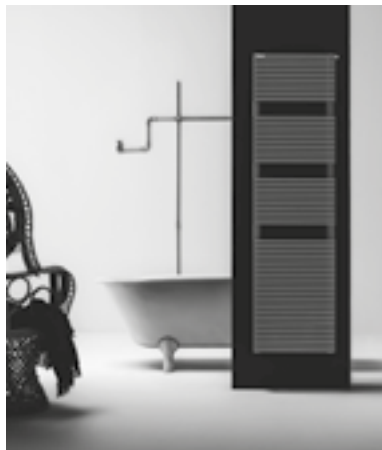
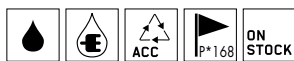


# Trim Bath

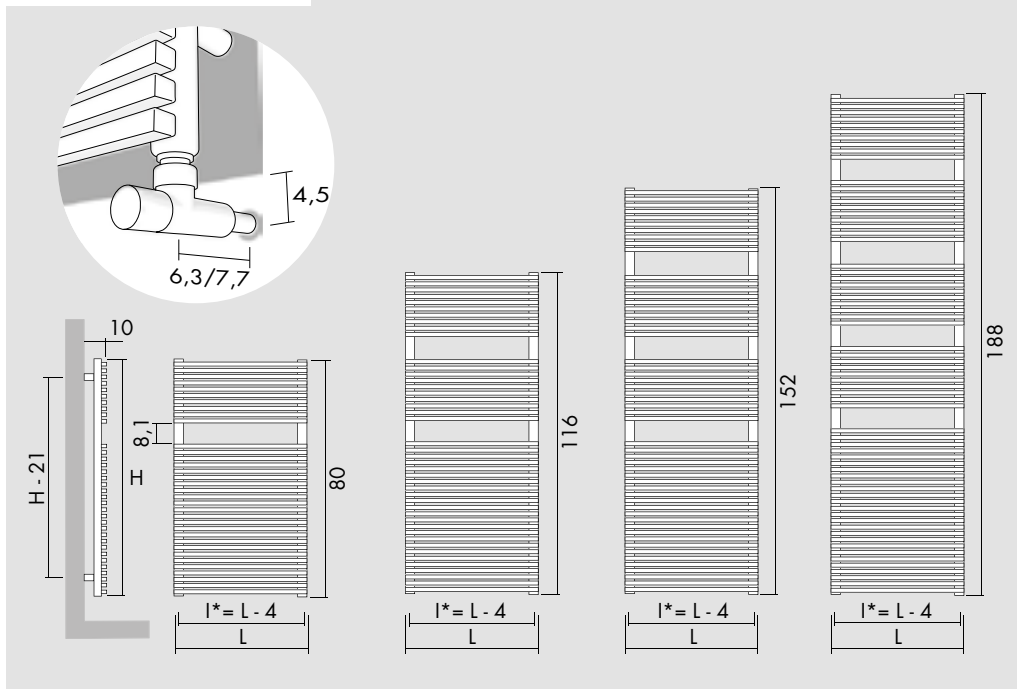
UNI EN 442  $\Delta t$  50° 75°/65°/20° -  $\Delta t$  30° 55°/45°/20°



Kcal = Watt x 0.860  
BTU = Watt x 3.413

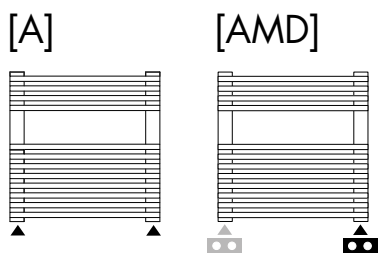
Watt  $\Delta t$  60° = Watt  $\Delta t$  50° x 1.255  
Watt  $\Delta t$  40° = Watt  $\Delta t$  50° x 0.758  
Watt  $\Delta t$  30° = Watt  $\Delta t$  50° x 0.530  
Watt  $\Delta t$  20° = Watt  $\Delta t$  50° x 0.320

p max = 10.0 bar

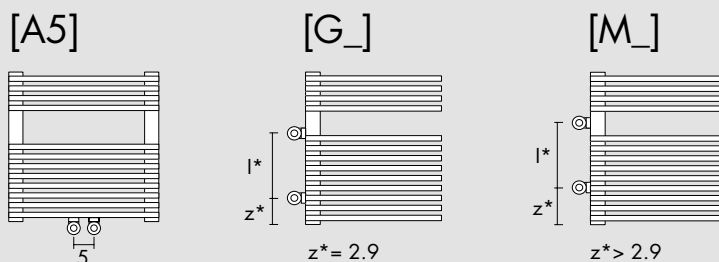


H cm	L cm	I* cm	art*	[B] STOCK	Lt*	watt $\Delta t$ 30°	watt $\Delta t$ 50°
80.0	40.0	36.0	<b>HB155040080_</b>	STOCK	3.9	236	<b>446</b>
80.0	50.0	46.0	<b>HB155050080_</b>	STOCK	4.6	295	<b>556</b>
80.0	60.0	56.0	<b>HB155060080_</b>	STOCK	5.2	352	<b>665</b>
116.0	40.0	36.0	<b>HB155040116_</b>	STOCK	5.5	330	<b>622</b>
116.0	50.0	46.0	<b>HB155050116_</b>	STOCK	6.5	410	<b>774</b>
116.0	60.0	56.0	<b>HB155060116_</b>	STOCK	7.4	490	<b>925</b>
152.0	40.0	36.0	<b>HB155040152_</b>	STOCK	7.2	420	<b>793</b>
152.0	50.0	46.0	<b>HB155050152_</b>	STOCK	8.4	523	<b>986</b>
152.0	60.0	56.0	<b>HB155060152_</b>	STOCK	9.6	625	<b>1 180</b>
188.0	40.0	36.0	<b>HB155040188_</b>	STOCK	8.8	520	<b>982</b>
188.0	50.0	46.0	<b>HB155050188_</b>	STOCK	10.3	634	<b>1 196</b>
188.0	60.0	56.0	<b>HB155060188_</b>	STOCK	11.8	758	<b>1 431</b>

Standard connection / Raccord standard  
Standard Anschluss / Conexión estándar



Special connection / Raccord spéciale / Speziell Anschluss / Conexión especial



Replace \_ with connection S (Left) or D (Right). / Remplacer le \_ avec raccordement S (Gauche) ou D (Droite). / Um linker oder rechter Anschluss zu bestellen, bitte das Symbol \_ mit S (links) oder D (rechts) ersetzen. / Sustituir el \_ con las conexiones S (Izquierda) o D (Derecha).

art\* = item / modèle / Artikel / artículo    I\* = pipe centres / distance entre depart et retour / Achsabstand / distancia entre las conexiones  
Lt\* = water content / volume d'eau / Wassergehalt / contenido de agua

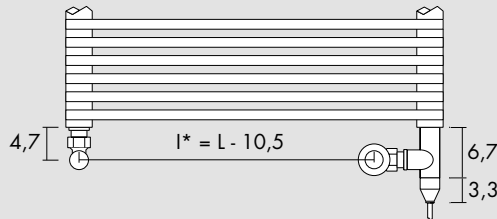
Dual application with schuko plug / Version mixte avec prise schuko /  
Kombimodell mit Schukosteckdose / Versión mixta con enchufe schuko

H cm	L cm	I* cm	art*	[B] STOCK	Lt*	watt $\Delta t$ 30°	watt $\Delta t$ 50°	watt
80.0	40.0	29.5	<b>MC HB155040080</b>	STOCK	3.9	236	<b>446</b>	350
80.0	50.0	39.5	<b>MC HB155050080</b>	STOCK	4.6	295	<b>556</b>	500
80.0	60.0	49.5	<b>MC HB155060080</b>	STOCK	5.2	352	<b>665</b>	500
116.0	40.0	29.5	<b>MC HB155040116</b>	STOCK	5.5	330	<b>622</b>	500
116.0	50.0	39.5	<b>MC HB155050116</b>	STOCK	6.5	410	<b>774</b>	700
116.0	60.0	49.5	<b>MC HB155060116</b>	STOCK	7.4	490	<b>925</b>	700
152.0	40.0	29.5	<b>MC HB155040152</b>	STOCK	7.2	420	<b>793</b>	700
152.0	50.0	39.5	<b>MC HB155050152</b>	STOCK	8.4	523	<b>986</b>	700
152.0	60.0	49.5	<b>MC HB155060152</b>	STOCK	9.6	625	<b>1 180</b>	1 000
188.0	40.0	29.5	<b>MC HB155040188</b>	STOCK	8.8	520	<b>982</b>	700
188.0	50.0	39.5	<b>MC HB155050188</b>	STOCK	10.3	634	<b>1 196</b>	1 000
188.0	60.0	49.5	<b>MC HB155060188</b>	STOCK	11.8	758	<b>1 431</b>	1 000

Included



Heating element  
Résistance  
Heizstab  
Resistencia



Optional



Receiver  
Récepteur  
Empfänger  
Receptor

**R10**



ECODESIGN

Digital chronothermostat  
Chronothermostat digital  
Der digital Chronothermostat  
Cronotermostato digital

**T11**

Dual electric element with thermostat / Mixte résistance avec thermostat /  
Kombimodell mit Raumthermostat / Versión mixta con termostato ambiente

H cm	L cm	I* cm	art*	[B] STOCK	Lt*	watt $\Delta t$ 30°	watt $\Delta t$ 50°	watt
80.0	40.0	29.5	<b>MT HB155040080</b>	STOCK	3.9	236	<b>446</b>	350
80.0	50.0	39.5	<b>MT HB155050080</b>	STOCK	4.6	295	<b>556</b>	500
80.0	60.0	49.5	<b>MT HB155060080</b>	STOCK	5.2	352	<b>665</b>	500
116.0	40.0	29.5	<b>MT HB155040116</b>	STOCK	5.5	330	<b>622</b>	500
116.0	50.0	39.5	<b>MT HB155050116</b>	STOCK	6.5	410	<b>774</b>	700
116.0	60.0	49.5	<b>MT HB155060116</b>	STOCK	7.4	490	<b>925</b>	700
152.0	40.0	29.5	<b>MT HB155040152</b>	STOCK	7.2	420	<b>793</b>	700
152.0	50.0	39.5	<b>MT HB155050152</b>	STOCK	8.4	523	<b>986</b>	700
152.0	60.0	49.5	<b>MT HB155060152</b>	STOCK	9.6	625	<b>1 180</b>	1 000
188.0	40.0	29.5	<b>MT HB155040188</b>	STOCK	8.8	520	<b>982</b>	700
188.0	50.0	39.5	<b>MT HB155050188</b>	STOCK	10.3	634	<b>1 196</b>	1 000
188.0	60.0	49.5	<b>MT HB155060188</b>	STOCK	11.8	758	<b>1 431</b>	1 000

Included

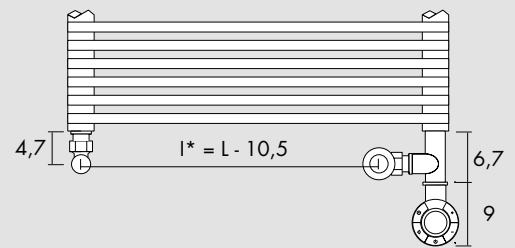


Thermostat / Thermostat  
Der Thermostat / Termostato  
[BIAN]  
[CROM]  
[NEOP]



ECODESIGN

Infrared remote control  
Télécommande infrarouge  
Infrarot-Fernbedienung  
Mando por infrarrojos



Optional



(P\* = 234)

Angled Valve  
Vanne équerre  
Eckausführung Ventil  
Válvula a escuadra

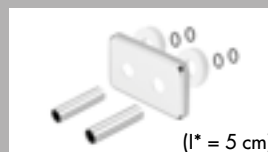
[BIAN] **E12SQB**  
[CROM] **E12SQR**



(P\* = 236)

Thermostatic head  
Tête thermostatique  
Thermostatkopf  
Cabezal termostático

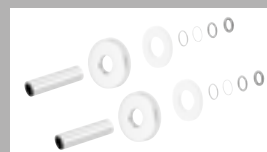
[BIAN] **TTB**  
[CROM] **TTR**



(I\* = 5 cm)

Sleeving kit  
Kit couvre tuyau  
Rosetten  
Kit cubre tubo

[BIAN] **C5B**  
[CROM] **C5R**



$\varnothing \leq 16$  mm  
[BIAN] **CTB**  
[CROM] **CTR**

$16 \text{ mm} < \varnothing < 24 \text{ mm}$   
[BIAN] **CWB**  
[CROM] **CWR**



(2 pz.)  
(P\* = 230)

Towel hooks  
Paire de patère  
Crochet das Bugel  
Percha

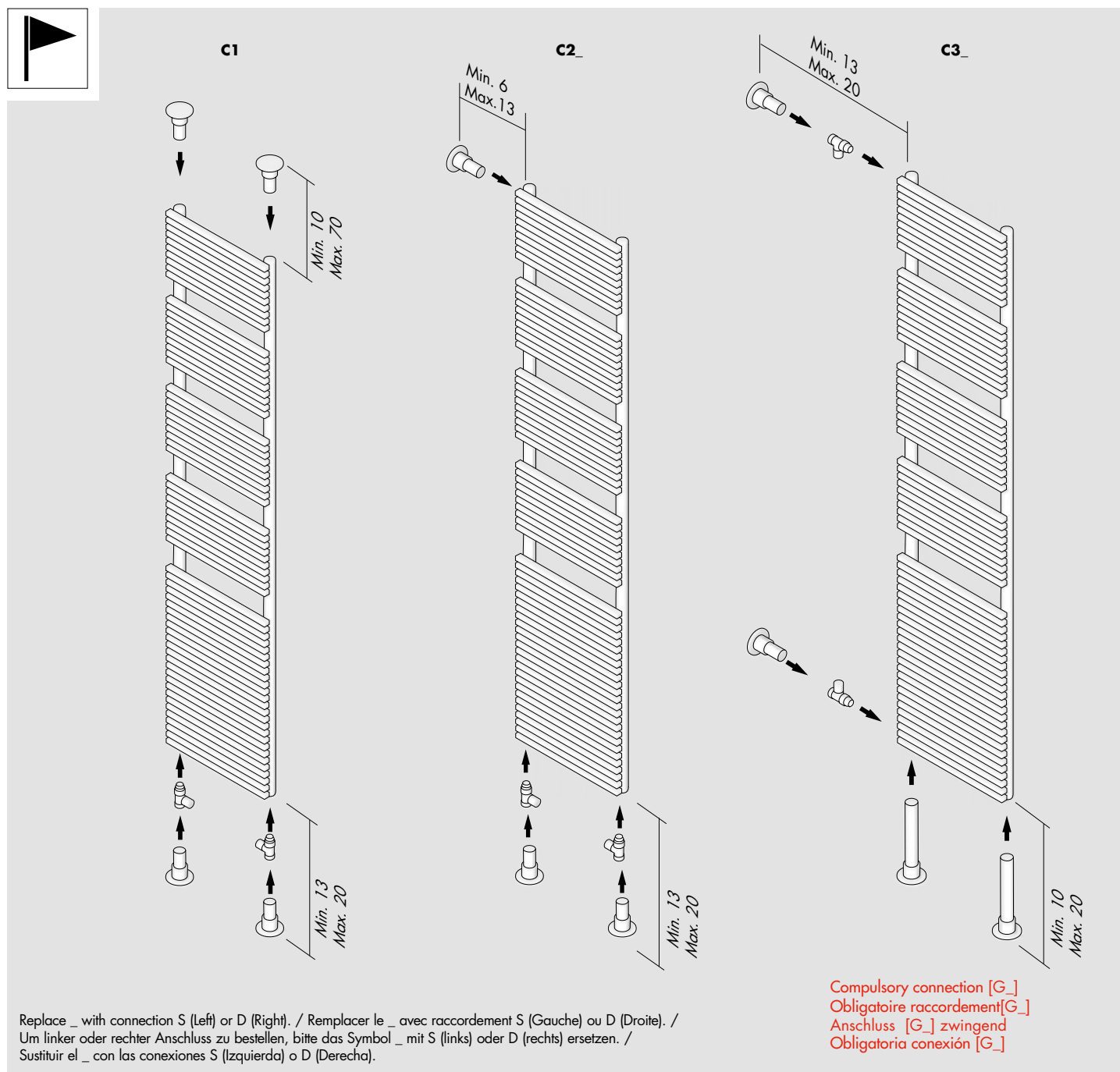
[INOX] **3A15X**

art\* = item / modèle / Artikel / artículo I\* = pipe centres / distance entre depart et retour / Achsabstand / distancia entre las conexiones

Lt\* = water content / volume d'eau / Wassergehalt / contenido de agua

P\* = page / page / Seite / página

# Divider / Clastra / Befestigungsstück / Fijación a bandera



Valves are not included  
Les vannes ne sont pas incluses  
Ventile sind nicht enthalten  
Las válvulas no están incluidas

	C1	C2_	C3_
<b>Trim Bath</b>	L* ≤ 90	L* ≤ 60	L* ≤ 60
<b>H_20 Bath</b>	L* ≤ 90	L* ≤ 60	L* ≤ 60
<b>BD 13 S</b>	L* ≤ 90	L* ≤ 60	L* ≤ 60
<b>BD 13 D</b>	L* ≤ 60	L* ≤ 40	L* ≤ 40
<b>BD 25 S</b>	L* ≤ 90	L* ≤ 60	L* ≤ 60
<b>BD 25 D</b>	L* ≤ 60	L* ≤ 40	L* ≤ 40

The divider installation is not available for chrome or gold finished.

Les fixations Clastra ne sont pas disponibles pour les finitions chrome ou doré.

Fahneanschlüsse nicht verfügbar für Chrome oder Gold Heizkörper.

Fijación a bandera no disponible para la versión en acabado cromado o dorado.

L\* = width / longueur / breite / ancho